

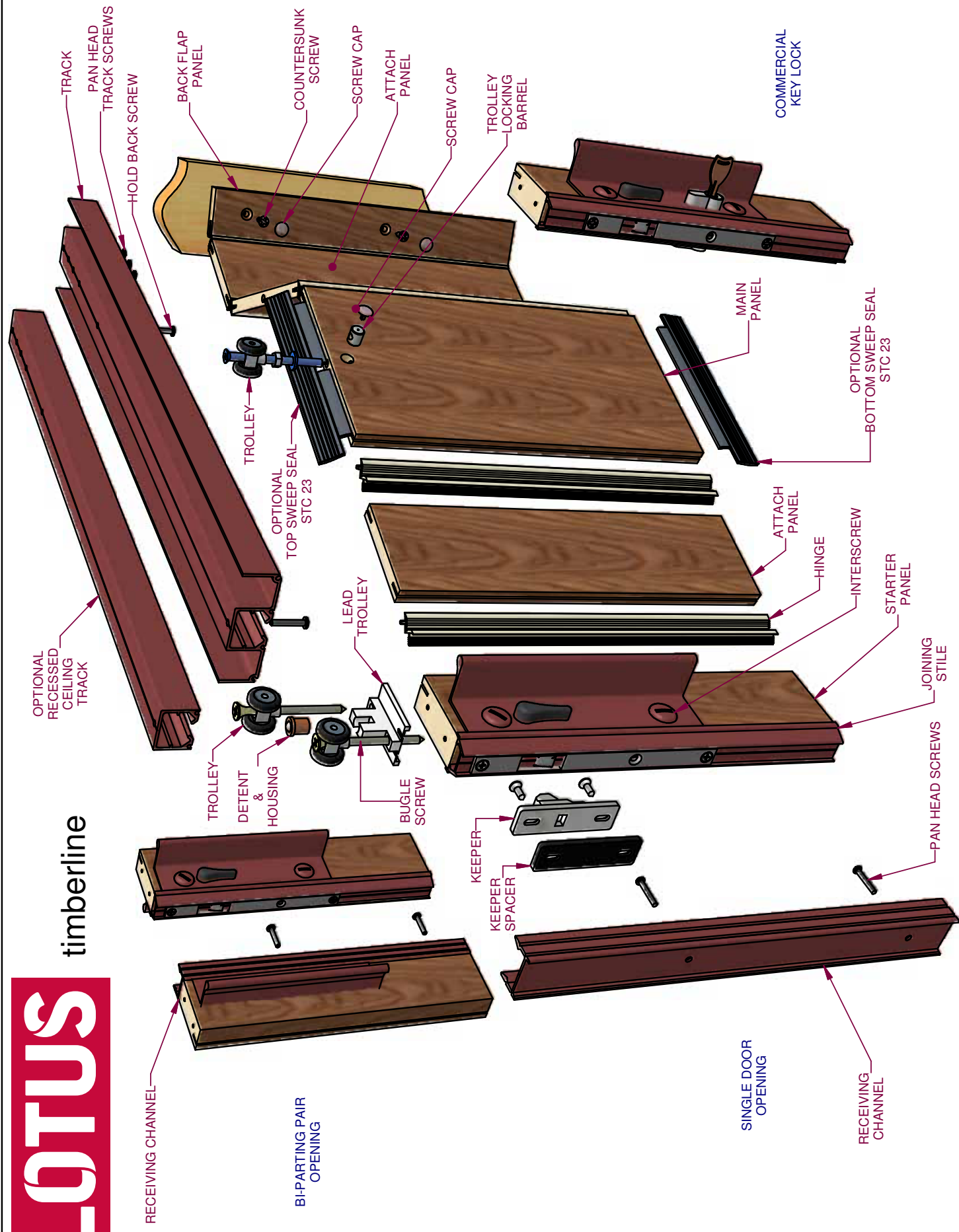


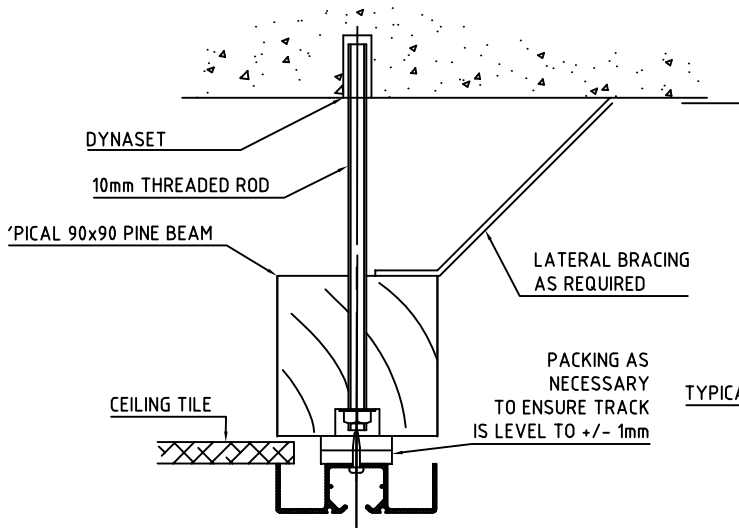
## Timeline



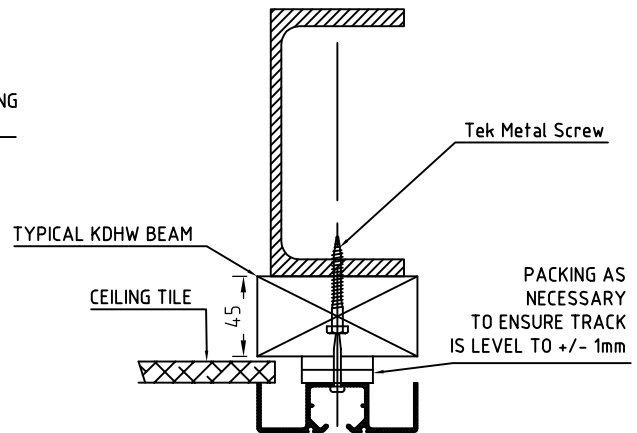
## Index of Timberline

[illegible]

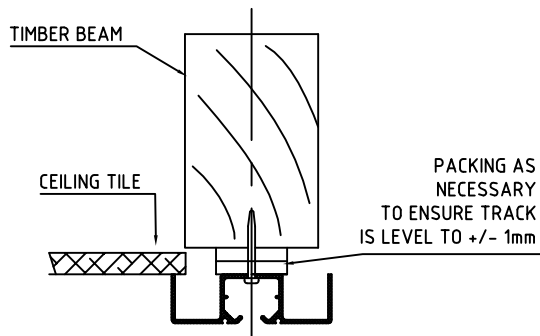




TRACK DIRECT TO TIMBER

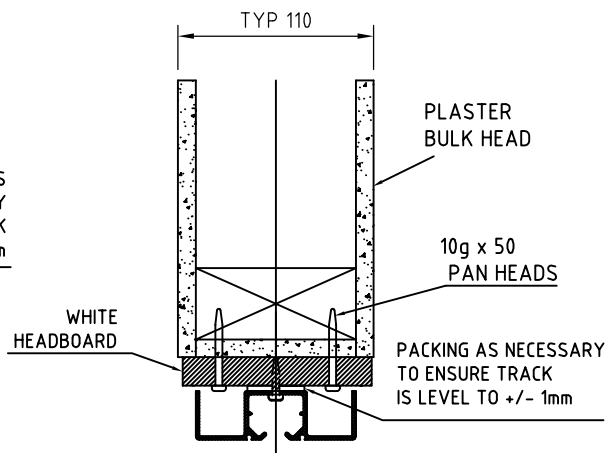


TRACK DIRECT TO P.F.C.



TRACK DIRECT TO TIMBER

WHERE ACCESS ABOVE CEILING IS DIFFICULT SUITABLE BEAM MAY BE SUPPORTED AT EACH END BY KD HARDWOOD ( MAXIMUM DEFLECTION 5mm UNDER LOAD )



SURFACE MOUNTED TRACK

A	Updated head work detail	07-02-11
REV	REVISION REMARKS	DATE

TITLE:

HEADWORK OPTIONS

PRODUCT:

TIMBERLINE FOLDING DOOR

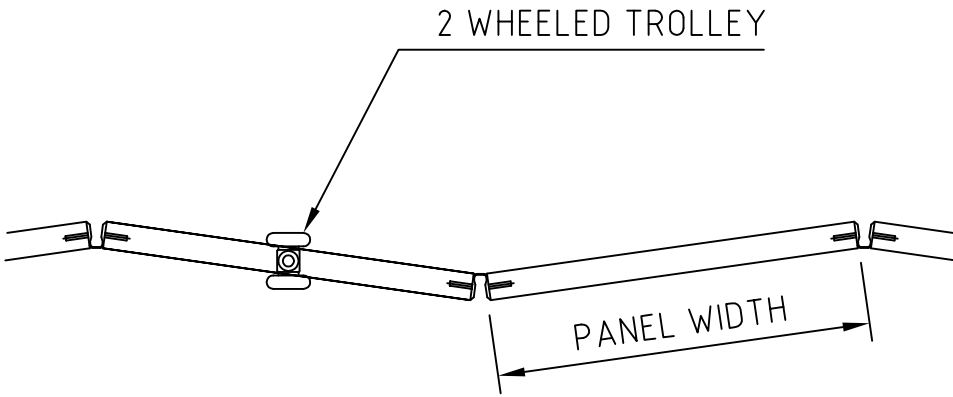
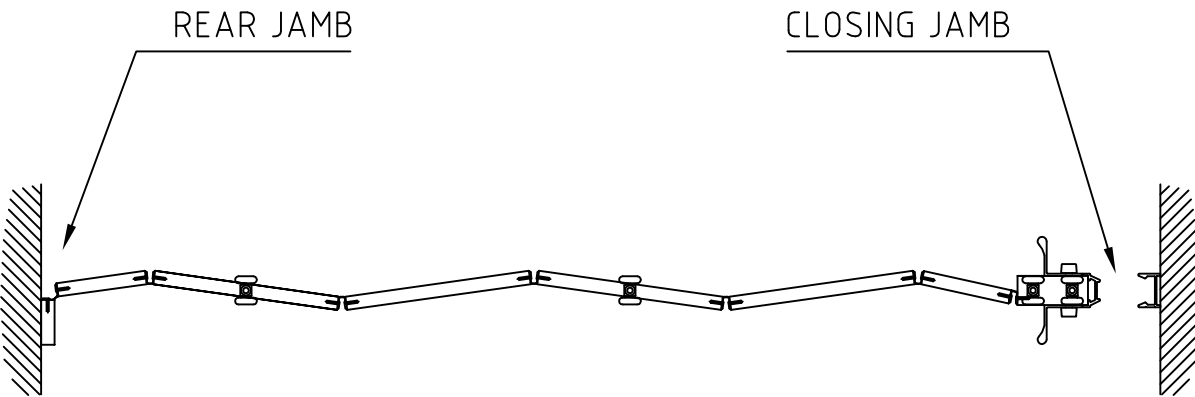
DRAWING NUMBER:

FT-0101

SEQUENCE NUMBER:

1

**LOTUS**



PANEL WIDTH UP TO 2100mm HIGH = 110mm  
 PANEL WIDTH OVER 2100mm HIGH = 170mm

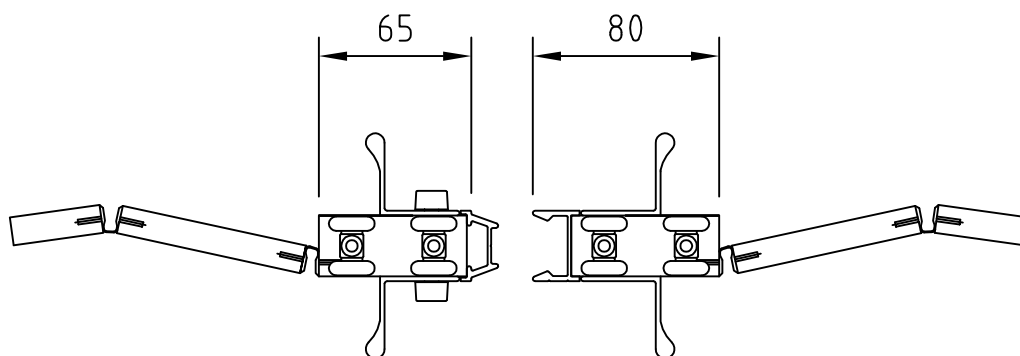
TYPICAL MODULE

			TITLE:  PLAN VIEWS - SHEET 1 OF 2	
REV	REVISION REMARKS	DATE	PRODUCT:  TIMBERLINE FOLDING DOOR	
<div><div>LOTUS</div></div>				
			DRAWING NUMBER:  FT-0102	SEQUENCE NUMBER:  2

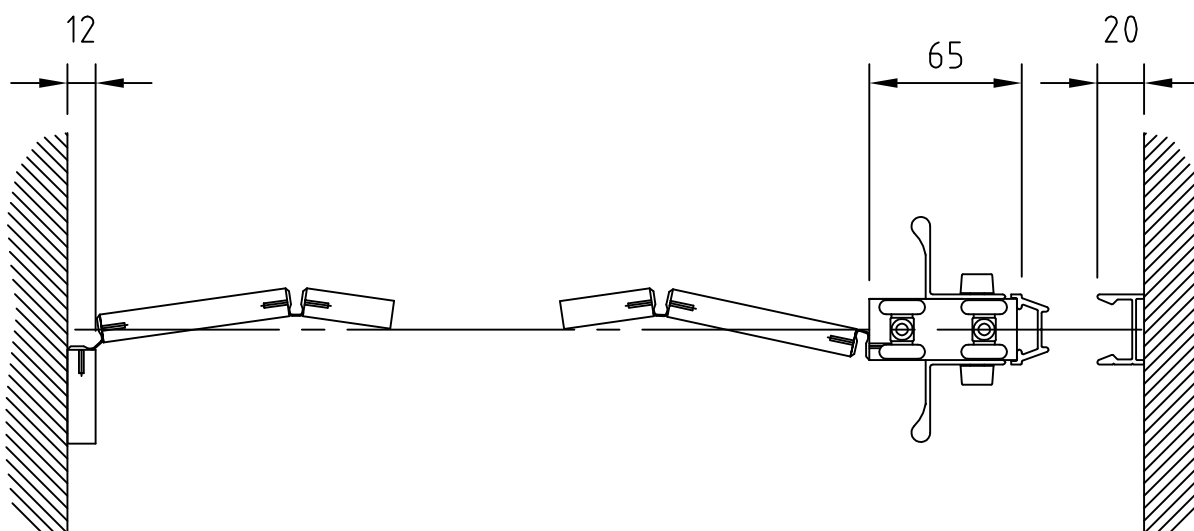
glas-STAX

operable walls

folding doors



BIPARTING PAIR - CLOSING JAMBS



REAR JAMB

CLOSING JAMB

REV	REVISION REMARKS	DATE

**LOTUS**

TITLE:

PLAN VIEWS - SHEET 2 OF 2

PRODUCT:

TIMBERLINE FOLDING DOOR

DRAWING NUMBER:

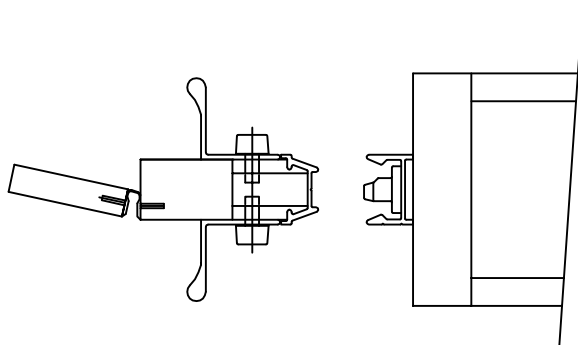
FT-0103

SEQUENCE NUMBER:

3

OPTIONAL KEYLOCK

KEEPER CONTAINED  
WITHIN JAMB



REV	REVISION REMARKS	DATE

TITLE:

LATCHING

PRODUCT:

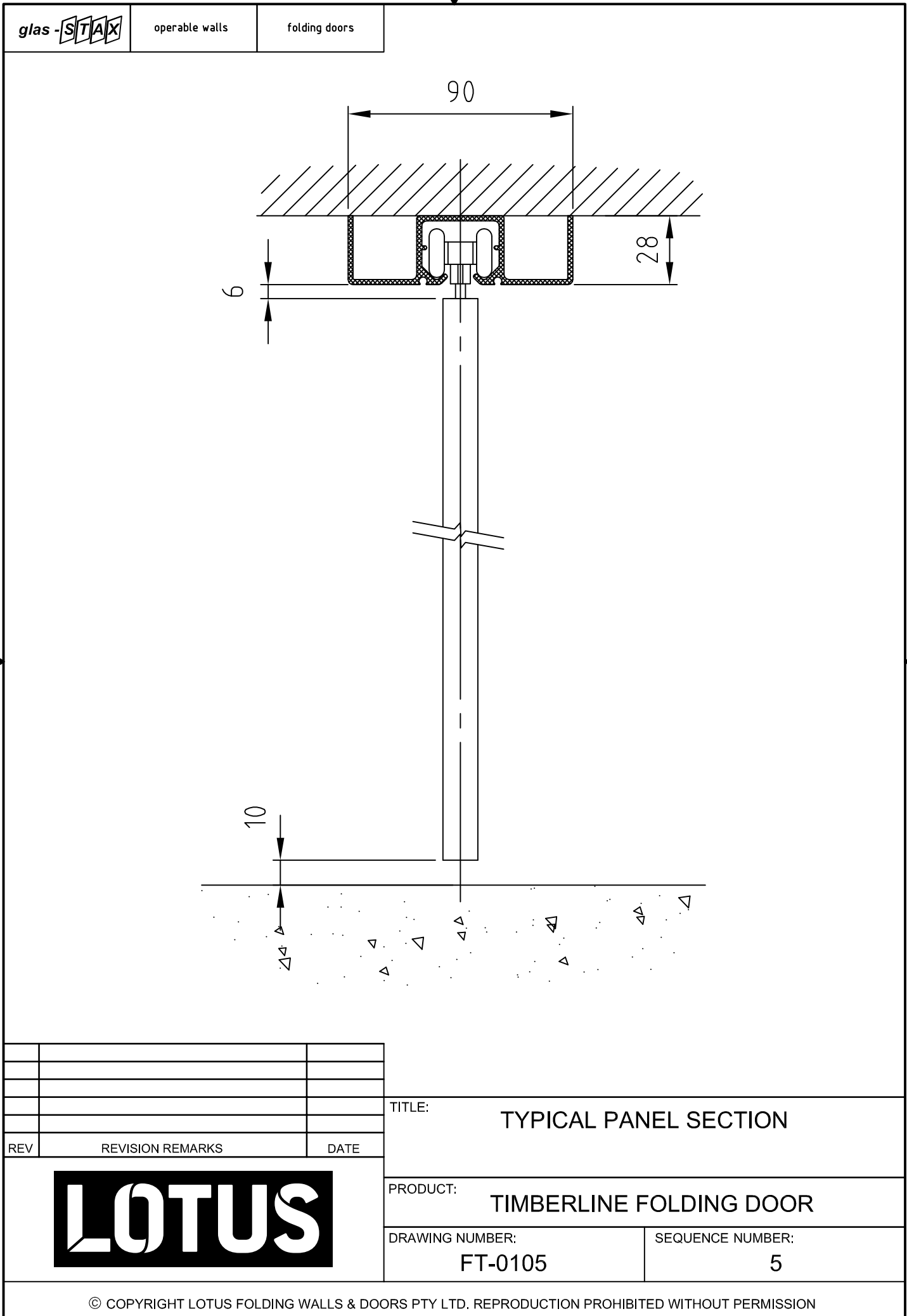
TIMBERLINE FOLDING DOOR

DRAWING NUMBER:

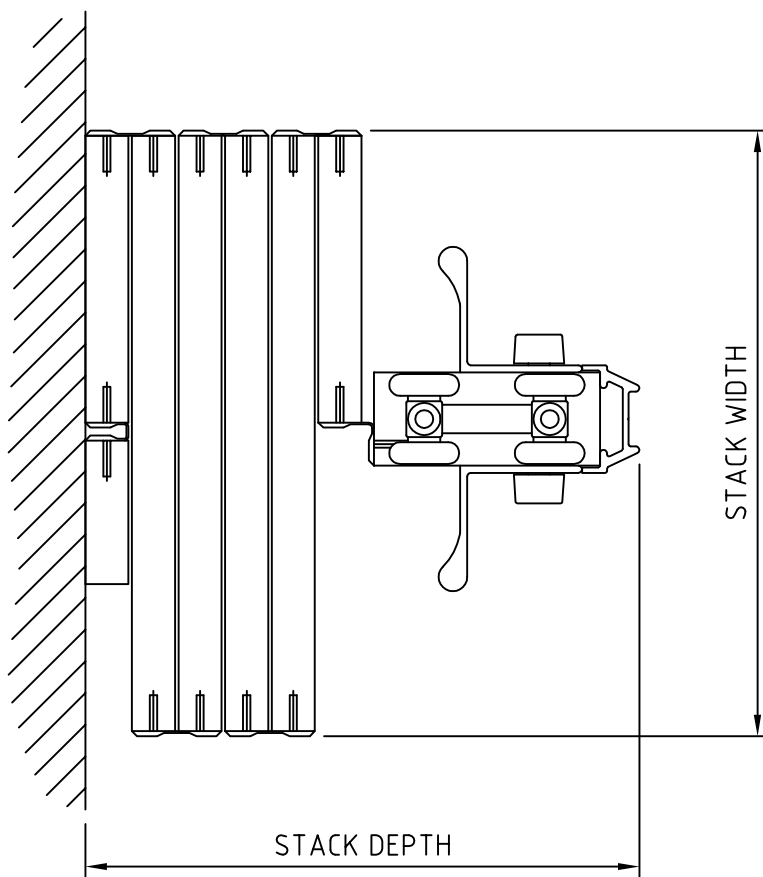
FT-0104

SEQUENCE NUMBER:

4







FORMULAE      STACK WIDTH      FOR PANELS OVER 2100mm HIGH      = 170mm

STACK DEPTH      (No OF PANELS WIDTH +2 PANEL WIDTHS) x 13 + 80

NUMBER OF PANELS CAN BE CALCULATED ACCORDING TO THESE FORMULAE

FOR PANELS OVER 2100mm HIGH TO MAX 3600mm      ( FOR PANELS UNDER 2100mm )  
( REFER TO DRAWING FT-0107 )

SINGLE DOOR :       $\frac{\text{OPENING WIDTH} - 260}{166}$       =      No PANELS

BIPARTING PAIR :       $\frac{\text{OPENING WIDTH} - 490}{166}$       =      No PANELS ( ROUND UP EVEN )

REV	REVISION REMARKS	DATE

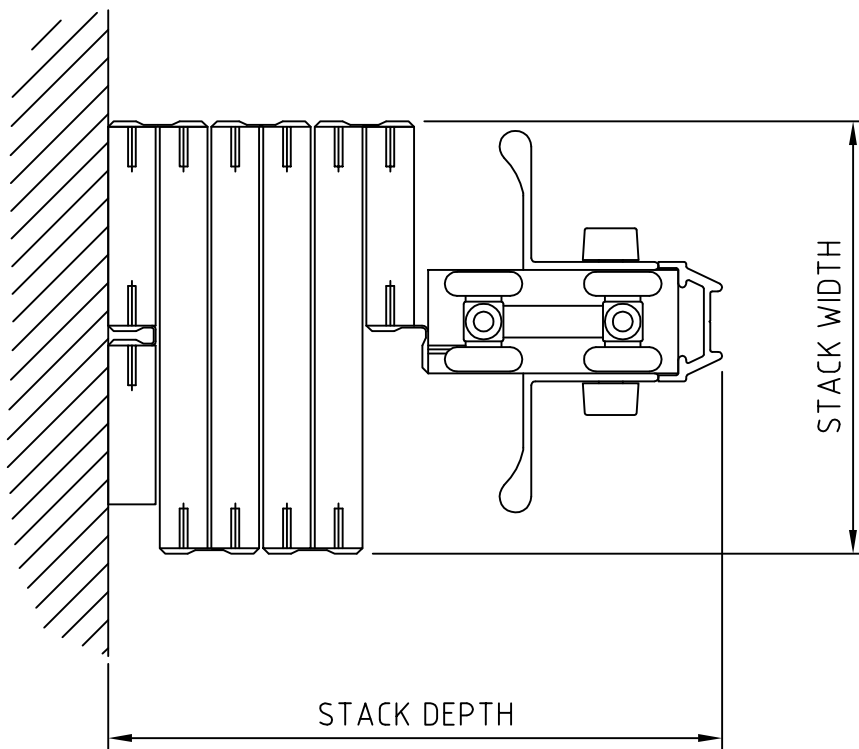
**LOTUS**

TITLE:      **STACKING - 170mm WIDE PANELS**

PRODUCT:      **TIMBERLINE FOLDING DOOR**

DRAWING NUMBER:      **FT-0106**

SEQUENCE NUMBER:      **7**



FORMULAE      STACK WIDTH      FOR PANELS UP TO 2100mm HIGH = 110mm

STACK DEPTH      (No OF PANELS WIDTH + 2 PANEL WIDTHS ) x 13 + 80

NUMBER OF PANELS CAN BE CALCULATED ACCORDING TO THESE FORMULAE

FOR PANELS UP TO 2100mm HIGH

( FOR PANELS OVER 2100mm )

( REFER TO DRAWING FT-0106 )

SINGLE DOOR :       $\frac{\text{OPENING WIDTH} - 195}{104}$       =      No PANELS

BIPARTING PAIR :       $\frac{\text{OPENING WIDTH} - 365}{104}$       =      No PANELS ( ROUND UP EVEN )

REV	REVISION REMARKS	DATE

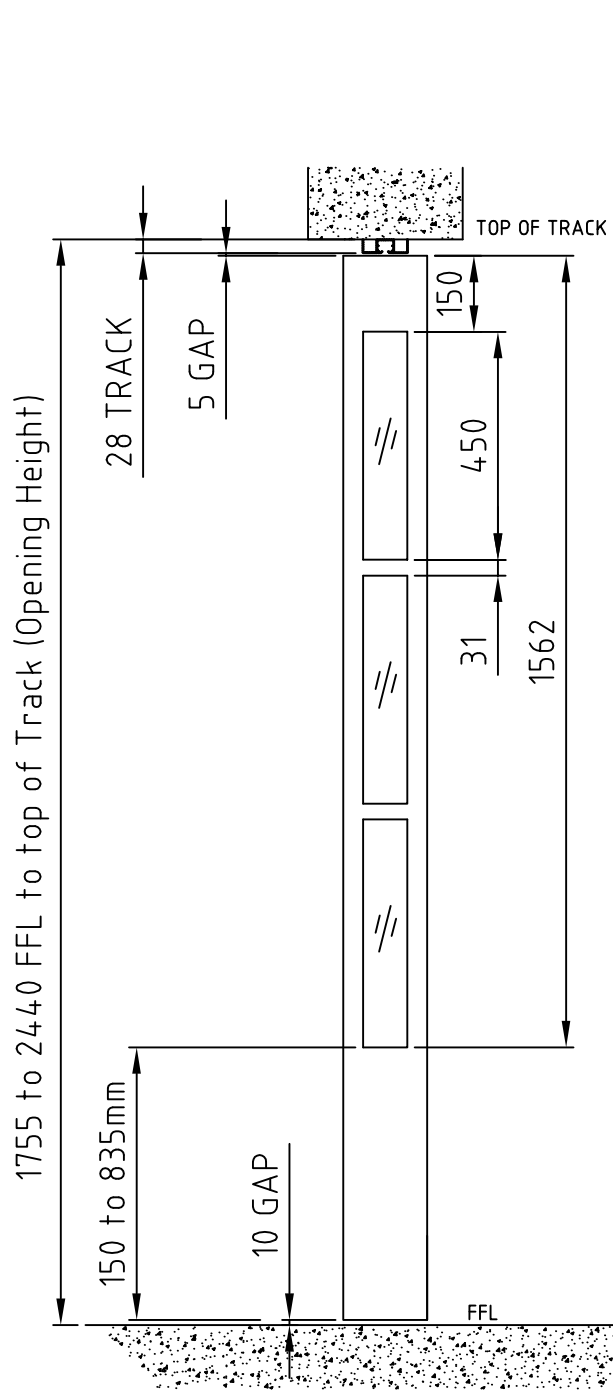
TITLE:      **STACKING - 110mm WIDE PANELS**

PRODUCT:      **TIMBERLINE FOLDING DOOR**

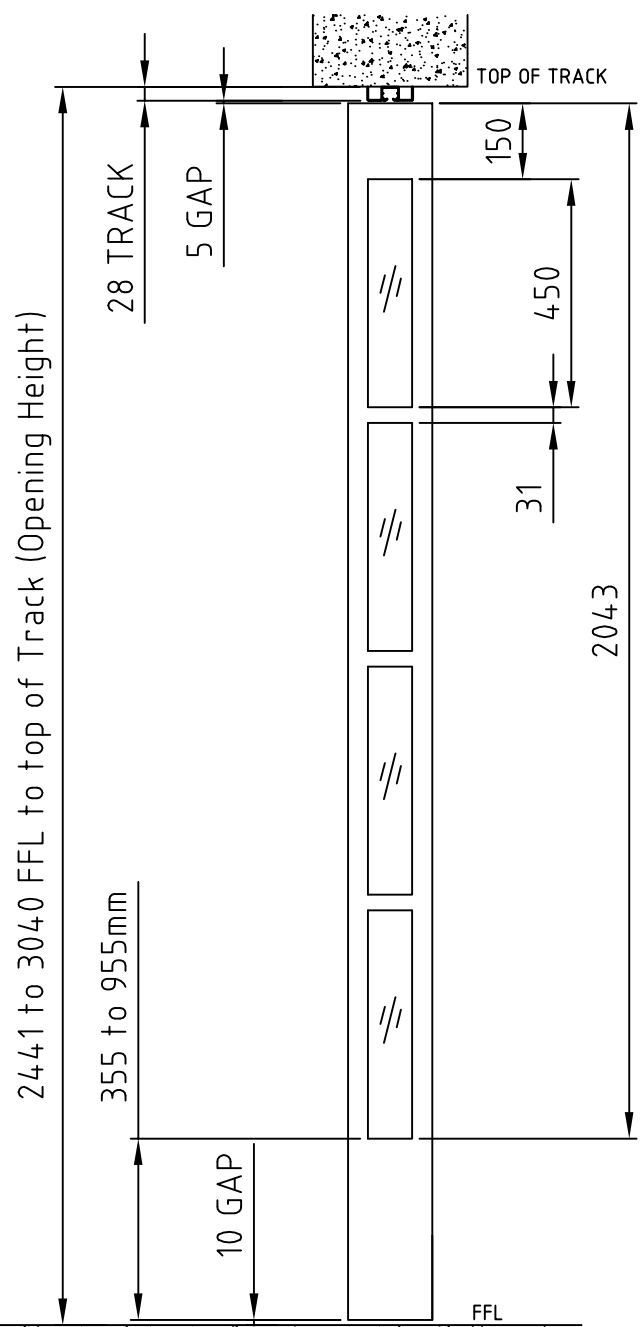
DRAWING NUMBER:      **FT-0107**

SEQUENCE NUMBER:      **6**

**LOTUS**




These Panel Heights  
are a  
3 Window configuration



These Panel Heights  
are a  
4 window configuration

Note: Panel Height = Opening Height - 43mm

REV	REVISION REMARKS	DATE
		

TITLE: Window Configuration	
PRODUCT: Timberline Windows	
DRAWING NUMBER: FT-0108	SEQUENCE NUMBER: 0



